



# Starfish in Action

Starfish Early Alert  
March 2021 Edition



Calling out March, the month of  
Progress Surveys!

## NVC is making PROGRESS

NVC Completed the first ever Electronic  
Progress Surveys!

2,054 Progress Survey  
Item Responses

89  
Faculty Participants

March 3rd 2021  
Progress  
Survey  
Announcement

March 8th 2021  
Progress  
Survey  
Deployed

March 17th 2021  
Progress  
Survey  
Reminder

March 25th 2021  
Progress  
Survey  
Closed



# 1,206 KUDOS

"Thank you so much it meant  
a lot to me. I have been trying really hard in  
the class; it feels good to be noticed."

This is a student response via email after receiving a  
Keep Being Awesome KUDO through Starfish in  
recognition of their hard work in their course

## Starfish Super User

"Starfish is very instrumental in collecting  
feedback from faculty and most importantly  
connecting students to counselors and resources  
they need to be successful.

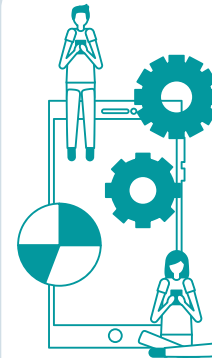
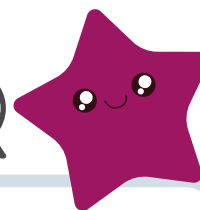
I am very thankful for the feedback in Progress  
Surveys we in EOPS received from professors.

... Even if there no feedback received during that  
time, I can still show them what Starfish is. The  
resources and connections are valuable to  
students." - Maricel



**Maricel Rossi**

EOPS Counseling Faculty  
Professor of Counseling



# 1,606

Students have  
logged into  
Starfish!



## OFFICE HOURS IN STARFISH

10 Faculty Participants

34 Total Appointments  
Conducted

### Faculty Feedback:

"It is very easy to use!"

"Syncs to my Outlook calendar!"

"Super User Friendly."

"You can customize and quickly edit."

## TOP 5

### Most Raised Tracking Items

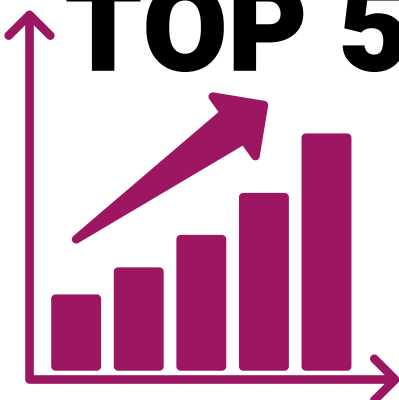
731 Keep Being Awesome

341 Missing/Late Assignments

308 Great Participation in Class

295 In Danger of Failing

219 Low Quiz/Test Scores



### PHASE 1 ROLES

Faculty, Counseling Faculty, Support Program  
Counseling Faculty, Support Program  
Administrative Assistants, and Students.



[Starfish@napavalley.edu](mailto:Starfish@napavalley.edu)



<https://www.napavalley.edu/starfish>